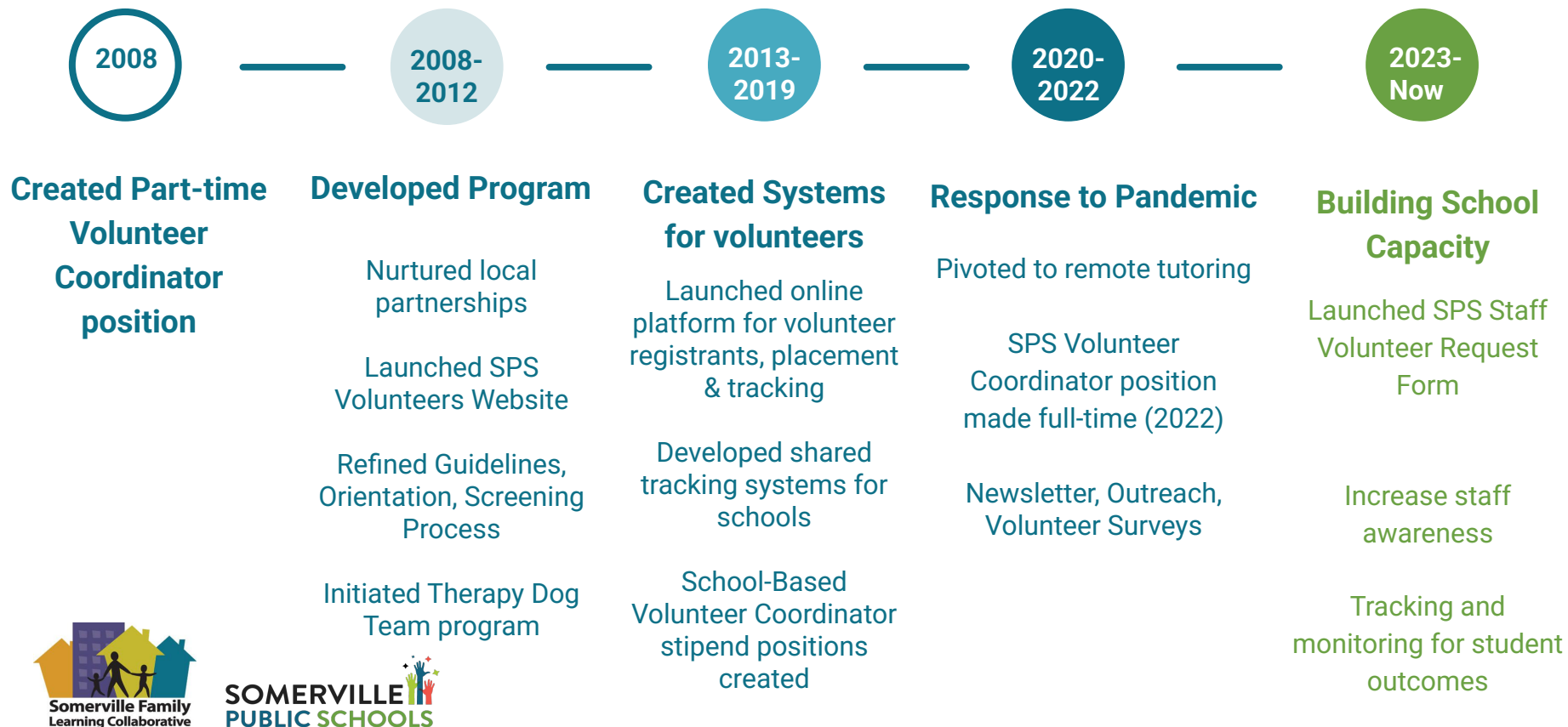




SPS/SFLC Volunteer Program: 2024-25



Building Capacity, Serving Students



How does this program work?

VOLUNTEERS:

1. Self-register

District Volunteer Coordinator screens applicant pool.

2. Attend Orientation

District Volunteer Coordinator invites candidates to in-person orientation to introduce guidelines, best practices, submit CORI and share volunteer opportunities.

Volunteer Placements Made

- mutual interests
- availability
- skills, e.g. languages
- capacity
- experience

4. Ongoing Monitoring

School-based Volunteer Coordinators District Volunteer Coordinator checks in with SPS Staff and volunteers for feedback.

SPS STAFF:

1. Staff Request Volunteers

SPS Staff make request for support.

2. Coordinator Reviews Requests

School-based Volunteer Coordinators and District Volunteer Coordinator assess individual requests and needs.

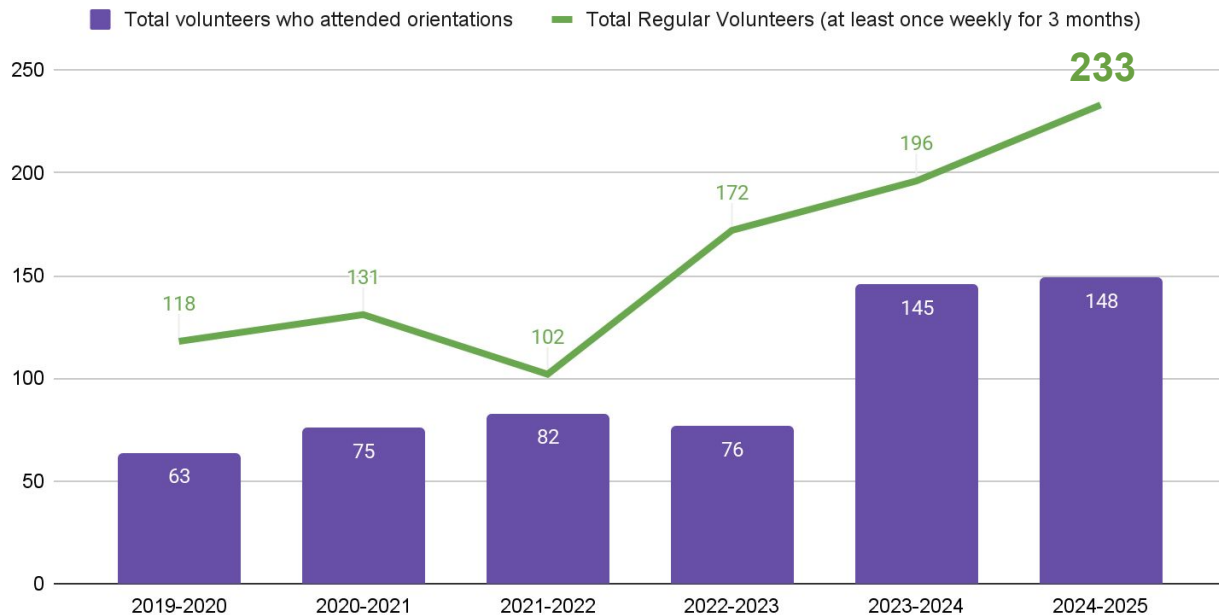


Increase interest in volunteering from community

Profile of interested community members:

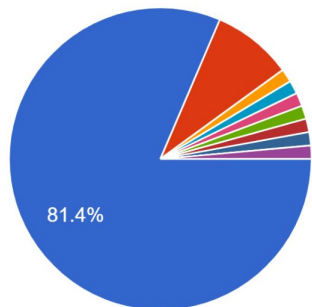
- Ages 24-36
- Retirees
- Post-secondary degrees or higher
- Moved to Somerville within last 5 years
- In tech, math, engineering & health fields
- Proficient in many languages

Total volunteers who attended orientations and Total Regular Volunteers (at least once weekly for 3 months)



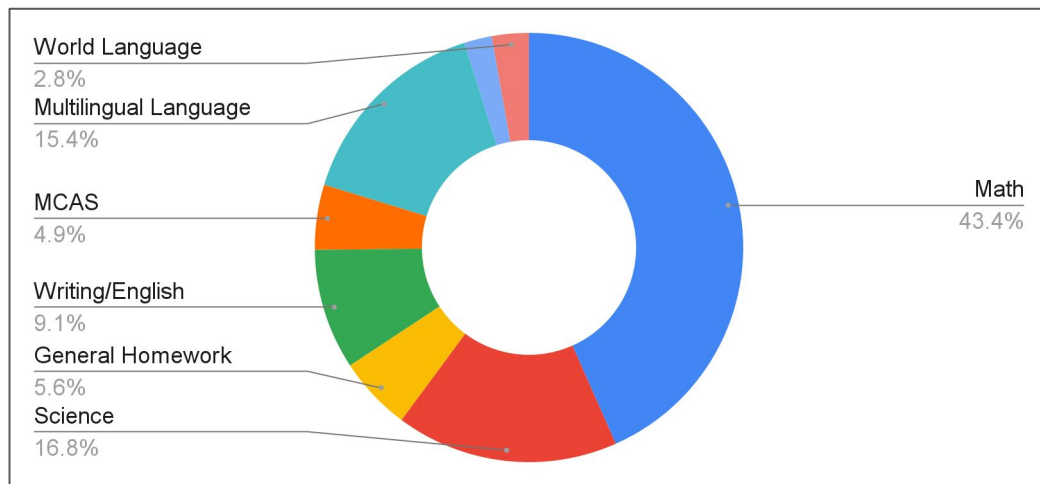
Requests for volunteers from Somerville High School

What kind of support are staff looking for?

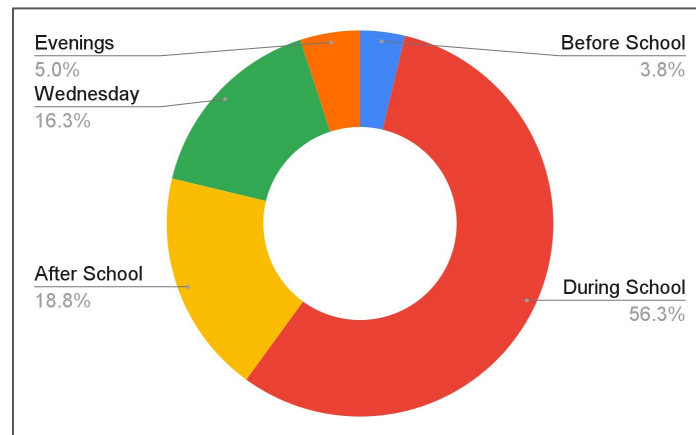


- 1:1 Academic support or homework help
- Classroom academic support (small group work)
- Extensions/Enrichment activities
- Social emotional support (1:1 mentoring)
- Community Service Projects
- Request for guest speakers / workshops
- MCAS Prep
- Academic Success Class

In which areas have staff requested 1:1 support for students?

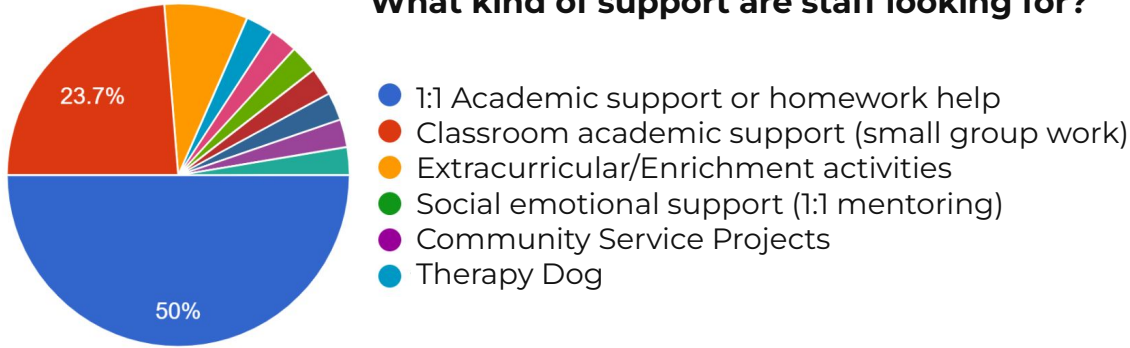


What are students' time preferences?

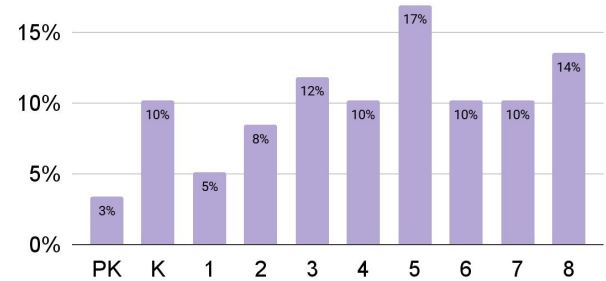


Requests for volunteers from PK-8 schools

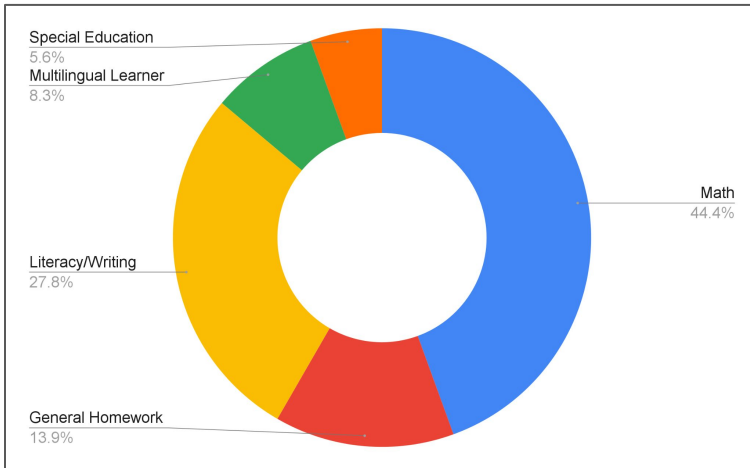
What kind of support are staff looking for?



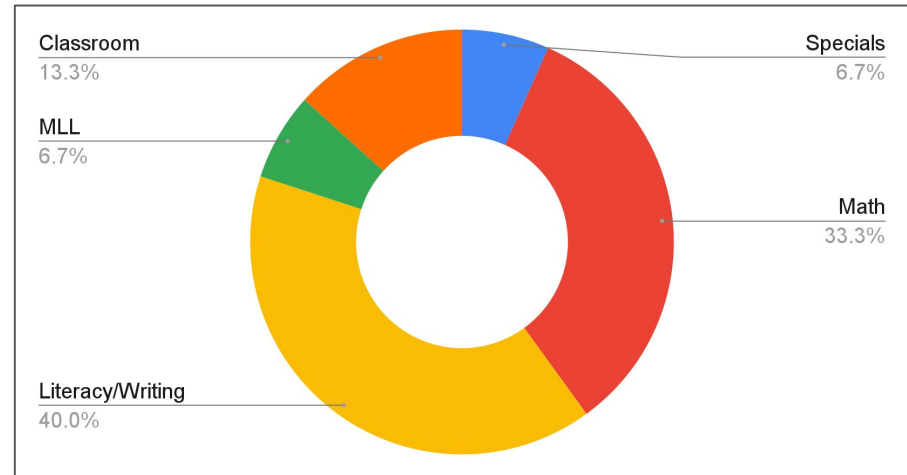
Which grades have requested support?



In which areas have staff request 1:1 support?



In which areas have staff requested classroom support?



Volunteer Placements

Types of placements in school-day settings:

- Classroom/small groups
- 1:1 tutoring before, during or after school
- Multilingual support
- College Preparation
- MCAS Prep
- 1:1 Mentorship
- Field trip chaperones
- Guest speakers

Types of placements, out-of-school hours

- First Gen Mentoring Program, SHS
- Enroot, SHS
- SCALE
- Soccer Without Borders, WHCIS @Edgerly
- Community Schools After School Programs
- SPS Summer Programs
- SFLC Basic Needs / Food Markets /
- School-Based Events



Goals for SY2025-2026

- Assess correlation between 1:1 volunteer tutoring and student outcomes
- Work with K-8 STEM Curriculum Coordinator to develop Grd 6 volunteer math supports; build structures to align volunteer math tutoring with curriculum and instructional approach
- Identify locations for out-of-school time tutoring; assess need for and capacity to offer remote tutoring



Special Thanks to Partners

Type of Support	Organizations
Languages, Literacy, Math	Tufts Spanish in Community course
Literacy, Math	Greater Boston Jewish Coalition for Literacy
Career, College prep, Mentoring	Enroot
Therapy Dog Teams	Dog B.O.N.E.S of Massachusetts
Tutors	MIT Alumni Club
Tutors, Projects	Tufts Chemistry, Math Depts; Tufts Civic Life; Tufts Eliot-Pearson, Tufts FOCUS...
Reading, Mentoring	Read to a Child
Recess support	Nike @Assembly
After School	Soccer Without Borders...

SPS Volunteers

Serving and Inspiring

'Nicole is fantastic and the BEST volunteer I have ever worked with. The students love her and are so happy every Friday morning.'

- Jo-Ann Dwyer, Resource Rm/Sped Educator, Arthur D. Healey School

'I really loved being able to get to know the students. The main student I worked with I got to know on a personal level. We connected because I am applying to medical school and that's something she wants to do one day, so I was able to give her some advice. Although we were working on algebra and chemistry, the time went by quickly as I tried to make it fun and we built a rapport! I loved volunteering here.'

- Amelia Lemont, SHS Volunteer Math and Science Tutor

Jen Capuano (she/her/hers)
SPS/SFLC Volunteer Coordinator

167 Holland St., Tufts Administration Building, Suite 308
Somerville, MA 02144

617-625-6600 x6023

jcapuano@k12.somerville.ma.us

www.somerville.k12.ma.us/volunteer

